

## **NO DRENCH CAPS**

As many of you have already heard, we can now confirm that there will be no Bionic or Extender Capsules available this Spring. This is the result of a pay-out issue that was detected in Bionic Junior Capsules (which we have never sold) that lead to questions around efficacy and residues. Bionic Plus and Extender capsules have been caught up in this investigation and Boehringer Ingleheim have withdrawn all capsules from the market until all investigations have finished.

This means farmers who were routinely using capsules will need to look at other options this Spring. However there are no simple solutions!

Going cold turkey is one of the options. With the current challenges many are facing with drench resistance it is probably the best option for many. If you take this course, ensuring you feed your ewes as well as possible leading up to May becomes critical. This will involve:

- Condition scoring ewes and preferentially feeding the lighter end of the flock.
- Possibly adjusting stocking rates and sheep to cattle ratios.
- More use of winter crop and nitrogen to meet feed demands.
- Grazing hoggets out to create more space for ewes.

For some, the use of a long acting moxidectin injection may be an option especially where ewes will be under unavoidable pressure. Centramox, an alternative capsule, has been available in the market for the last couple of years. We cannot source these capsules and from what we understand, all product for this year has been sold.

## **WINTER IS ON IT'S WAY...**

Well, daylight savings has ended and we start to think about winter!! On the vast majority of clients farms stock are generally in good order and feed covers are excellent. (Almost too much in some cases!!) It will be interesting to see how the grass grows this autumn and early winter given the exceptional summer growth we have experienced. The nitrogen has to run out at some point!

Poor growth rates and health issues in lambs has been a major challenge for many. Lots of feed does not necessarily equate to good quality lamb tucker! Continual moisture has been ideal for the survival and proliferation of all sorts of worms, bacteria and fungi.

Start making those winter plans!!!

## **LOW SELENIUM IN EWE FLOCKS CONFIRMED**

Following on from last months newsletter a number of farmers had tested for selenium levels. In virtually all cases, selenium levels were below optimal levels. These low levels have the potential to impact negatively on ewe fertility this tugging.

Fortunately, in most cases it was not too late to supplement with selenium and correct the problem. For some flocks it was decided to delay mating for 7-10 days to allow the benefits of supplementation to kick in.

PS. We can also pretty much guarantee that selenium levels will be marginal or low in weaner cattle (either dairy or beef) if supplementation has not already occurred. With weaning underway and weaners being set up for winter, ensure selenium supplementation is considered.

## **BODY CONDITION SCORE**

In amongst all the grass, is your herd where it needs to be?

We are into April and winter is approaching!! Putting condition on cows gets harder as cows get more heavily pregnant and winter feeding regimes kick in. With all the grass it is very easy to keep on milking and not focus on the lighter end of the herd that needs some help.



Most dairy herds have now been pregnancy tested and the results have been variable. While most herds appear to be in quite good order, there are still some light cows out there. While some light cows are empty, others are pregnant but if not paid attention to now, will end up dry or late in calf next season!

Taking the time to condition score your herd now is well worth while. Light cows can be identified, dried off and preferentially fed giving them the best chance to perform next season.

If you would like a second opinion on your herd's condition, arrange with Cosmin to condition score your herd.

## **MORE INCOMPETENCE IN A GOVT DEPT!!**

As many will be aware we have really struggled with the supply of drenches this autumn. This has primarily been brought about as a result of the delays in getting animal remedies registered through the ACVM, the branch of MPI involved in this process.

When Boehringer Ingelheim, the sellers of Matrix (the biggest selling drench on the market), changed their manufacturing plant, they had to re-register Matrix. This was supposed to have been done last year. However, MPI lost a large percentage of the trained personnel in this area, so the rate at which they could deal with registration turned to a trickle.

No doubt they have plenty of PR consultants, a group advising on the traditional Maori approach to the registration of veterinary medicines, and a gender and culturally diverse leadership, just no one to do the bloody work!

## BLOATING IN DOGS

Gastric dilatation and volvulus (or twisted stomach) is something we consider a true surgical emergency. It can start out with just a mild bloating of the abdomen which will usually rapidly progress to a very distended abdomen. Sometimes your dog may have unproductive vomiting/retching or be drooling. It may be painful in its abdomen and seem agitated.

Twisted stomachs' start out as a bloat and then the stomach can twist on its axis, cutting off the blood supply and trapping built up gasses and fluids. This rapidly causes the stomach wall to die off which may mean we need to surgically remove a portion of your dogs stomach, or sometimes we need to euthanise during surgery if too much stomach has died.

Bloat can occur secondary to stress, excitement, vigorous exercise, large meals (especially straight after exercise) and long drinks. If a close relative has experienced a twisted stomach this increases the risk for your dog. It is more common to see a twisted stomach early in the morning or late at night.

If you notice your dog starting to look tight in its belly, don't just leave it alone for a couple of hours to see what happens. Make sure you call us straight away to get advice.

There is a surgery we can do to prevent twisted stomachs. If you have a dog with a familial tendency this would be a good idea to look into.

After marrying a young woman, a 90 year old man told his doctor that they were expecting a baby.

"Let me tell you a story," said the doctor.

"An absent minded fellow went hunting, but instead of a gun, he took an umbrella. Suddenly a bear charged at him. Pointing his umbrella at the bear, he shot and killed it on the spot."

"Impossible!" the old man said.

"Somebody else must have shot that bear."

"Exactly," replied the doctor.

## MUSINGS

As some of you will be aware I was lucky enough to spend 2 weeks fishing in the far north. It is a long way to drag a boat and there is plenty of time to think. For some reason my thoughts were continuously drawn toward road cones and trying to solve all manner of questions.

Are the number of road cones inversely proportional to the IQ of the population?

Why are road cones red / orange? Would they work any better if they were blue?

Are road cones carbon neutral and biodegradable?

Why do I continually have urges to run over cones? (By this time I was through Hamilton.)

Why do the people working around road cones always seem to be moving slowly?

What do cones and the Labour Government have in common? I managed to work this one out. The more that congregate in one place, the bigger the cock-up and no one seems to know what they are doing.

Are road cones made in China and if so could they be spying on us?

If we melted down all the cones, could we fill in NZ's pot holes?

What gender are road cones?

With his auburn locks, is Chippy qualified to be head road cone after losing the next election?

At last I reached our destination, now I had the return trip to look forward to!

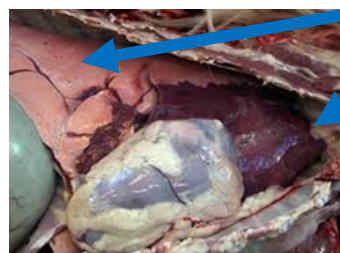
## LAMB PNEUMONIA

Viral pneumonia seems to be a real problem on a number of properties this season. We have investigated several cases of sudden death in lambs where clostridial problems were suspected but post mortem examinations revealed pneumonia to be the cause of death. Quite good lambs can die of acute pneumonia when bacteria enter the blood stream from damaged lung causing septicaemia and sudden death.

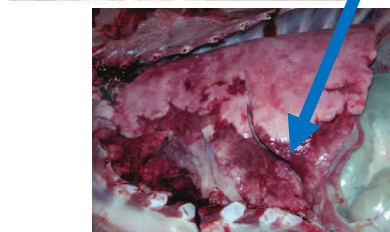
The more common picture for pneumonia is shelly, coughing lambs with poor growth rates. With time, most lambs get over the challenge of pneumonia if well fed and managed. For the most badly infected lambs it can make sense to treat with antibiotics to turn them around (costing around \$1 per lamb).

If you are running an 'antibiotic free' system, these treated lambs must be identified and traceable within your system.

Pneumonia is very easy to diagnose. Just cut the thorax open and look for pus and consolidated lungs that are often stuck to the rib cage (see the picture below). If you are unsure, send us a picture.



Normal lung



Consolidated (Pneumonic) Lung



## AFTER HOURS VET

Emergencies - 06 322 8058

Shop Hours - 8am to 5pm

Monday to Friday

Email - [huntervillevetclub@xtra.co.nz](mailto:huntervillevetclub@xtra.co.nz)