

## MORE LEPTO CASES

In last months newsletter we reported on lepto deaths in lambs. This trend has continued through January with several other properties affected. If this rain continues, so could this problem.

Be on guard for unexplained lamb deaths and a reminder that this disease also **affects humans**, so handle sick or dead lambs with caution and use disinfectant to wash with afterwards.

## SPORE COUNTS ARE STARTING TO RISE

As I write this newsletter we are experiencing hot, humid conditions that are perfect for rapid spore development. Recent spore counts confirm that while levels are generally not yet dangerously high, they are certainly on the move upwards. In years when we do see spore counts rise in late January, Facial Eczema tends to become a serious issue on many properties.

For dairy farmers, cows should have been receiving zinc supplementation since early January. It may pay to consider getting zinc **blood tests** done to check the effectiveness of your supplementation programme.

For farmers who spray to control spore levels, get your spray contractor booked in, and ensure you have access to the chemical. There is little point spraying once counts get to dangerous levels.

If you are **considering using zinc capsules** in cattle or sheep, please contact us to place orders ASAP. The way things are heading around the country, demand for capsules will be very high and securing product is likely to become an issue.

## INTERESTING TIMES

It is not often that we would be looking forward to a dry spell over February but that is certainly the case this year. A continuation of the weather patterns we have experienced will become a real issue when it comes to the health of stock.

Flies, fungi, worms and certain bacteria all thrive in these conditions leading to direct disease challenges or serious negative effects on feed quality. The next 2 months may be quite difficult when it comes to stock health and performance.

On a possibly brighter note, the ring leader has left the circus. Now another one of the clowns has been selected to ensure the show goes on. I can't really see much changing.



## WHEN TOO MUCH RAIN BECOMES A PROBLEM!!

While feed covers have probably never been higher at this time of the year, feed quality and grazing patterns are becoming a real issue. A lack of feed quality directly affects livestock performance, especially the growth rates of younger stock such as lambs. I have received several enquiries as to why lambs have not grown as well as expected. Poor feed quality and low lamb dry matter intakes are likely to be the problem.

Grazing patterns of stock also change as they tend to go back over the last grazed parts of the paddock. This effectively results in much higher stocking densities creating problems with worm challenges (especially Barbers Pole) and Facial Eczema.

### Barbers Pole Problems

We have seen a number of 4 week post drenching faecal egg counts where high counts are the result of early Barbers Pole build up. Current climatic conditions are perfect for the Barbers Pole worm life cycle and populations can grow rapidly.

While all drenches will kill Barbers Pole, a limited number containing either **moxidectin** or **closantel** have the ability to keep killing Barbers Pole for some time after drenching. The use of these types of drenches at this time of the year is very effective in reducing the Barbers Pole challenge. Unfortunately, Trimox which was a triple drench containing moxidectin, is no longer available. The only option is to use a straight moxidectin drench (such as Cydetin or Exodus) along with a combination drench such as Arrest. (Note, this involves double drenching—DO NOT MIX!)

We recommend double drenching as moxidectin by itself, while still giving very good Barbers Pole control, no longer kills other worms quite as well due to resistance issues on many properties.

Closantel containing drenches such as Polerise are the other option, however it is unsuitable for slaughter lambs due to long meat withholding.

2.2ths can also be at risk from Barbers Pole. Carrying out faecal egg counts in the coming weeks is a useful tool for monitoring possible Barbers Pole issues. Rising FECs in 2.2ths at this time of the year is most commonly associated with a Barbers Pole build up.

If you suspect serious Barbers Pole problems in lambs, check the membranes around the eye of the lambs that are lethargic and slow to move. Barbers Pole worm 'sucks blood' from the abomasum causing anaemia. The membranes will appear very pale when compared to other healthy lambs.

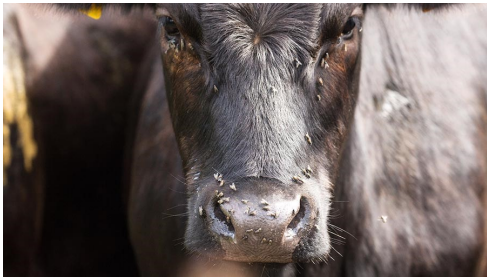
## FLIES ARE BITING

No surprises, from reports that we are getting, that fly challenge is high. This problem will only get worse as the heat and humidity persists.

Down on the dairy farm, 'biting flies' are a real nuisance. **Delmax Pour-on** is a nil milk withholding product which can be used to give your herd some relief from nuisance biting fly. A single treatment gives up to 4 weeks protection and costs \$2.00 for a 500kg cow.

We have had several inquiries around dipping sheep off shears. Yes, you can do it, but the protective period will be shortened, especially for jetting products. Pour-on dips such as Clik and Vetrazin Spray-on will give longer protection.

Remember, if active fly strike is an issue when dipping sheep, the best solution is to add Extinosad to the Cyromazine, or use Cyrex only, which contains both actives. Extinosad is very effective at killing maggots and a lot more user friendly than Maggo!!



## HOT COWS

Cows hate this high humidity and heat, and are easily stressed. The problem can be made worse by endophytes in rye grass. Heat stress has a significant negative effect on milk production. Herd managers should have grazing plans in place that avoid long afternoon walks for cows, and utilise shady paddocks on the hottest days. Also ensure water supply is right up to the mark and consider altering afternoon milking times.



## DON'T GET CAUGHT OUT

A client recently received a \$500 fine for sending 2 lame ewes in a line of works ewes. The ewes in question were not weight bearing on all 4 feet. Unfortunately there is little room to argue the toss in these cases, they take a video and pictures and send you the fine!!

Stock, whether they be cattle, sheep or deer, must be able to ***bear adequate weight on all 4 feet to be fit for transport.*** If things are a little too marginal or there is some anatomical change from normal, a vet certificate is required.

If you have a marginal ewe or lamb, take a video or picture of it and contact us. We can often assess whether the animal can be shipped without a transport certificate from a good photo or video.

## TREATING DOG WOUNDS

We sometimes see septic wounds on dogs that could have been prevented with some simple early nursing!! If your dog suffers a cut or abrasion, treat it like you would if you had been injured!

Thoroughly clean the wound with clean water and disinfectant or iodine. Having cleaned the wound, dress it with an antiseptic ointment or spray (ie Manuka Honey or the good old 'Tetracycline Blue Spray').

Some wounds may be able to be bandaged but ensure you check them in case they are too tight.



There appears to have been much rejoicing following the resignation of Jacinda Ardern. At this time it is appropriate to list the areas in which she contributed a positive influence on New Zealand and its future:

## REMINDER...

It is getting late in the year and you need to place your vaccine orders with us. We endeavour to have plenty of Campy and Salvexin in stock however Toxovax needs to be ordered specifically for each client.

Your Toxovax order must be placed in advance. This product is made to order and there is only a limited amount of it made each week. To ensure you get your order of Toxo when you want it please place your order with us ASAP!

## AFTER HOURS VET

**Emergencies - 06 322 8058**

**Shop Hours - 8am to 5pm**

Monday to Friday

**Email - [huntervillevetclub@xtra.co.nz](mailto:huntervillevetclub@xtra.co.nz)**