



# HVC

## YOUR CLUB

# FEB 21

## LAST CHANCE FOR ANDROVAX/OVASTIM

For anyone considering increasing potential lambing percentages time is running out if you intend to use Androvax or Ovastim.

Ewes vaccinated for the first time need two treatments 4 weeks apart with the second treatment given 4 weeks prior to the ram going out.

Androvax / Ovastim have proven to be highly effective as a way of increasing scanning and lambing percentages. The sweet spot for these products are ewes that normally scan under 165%. These ewes will generally have an increase of 20—25% in scanning over untreated ewes. Ewes that normally scan over 165% will still respond to treatment with a 20-25% increase in scanning percentage but this will result in a significant increase in triplet numbers!! If you have any queries around Androvax / Ovastim please give the clinic a call ASAP.

## CHEQUES—ON THE WAY OUT

With banks moving away from cheques we are taking this opportunity to remind clients that we accept payment both by direct debit and direct credit. If either of these options are something you would like to explore further please give us a call and we can talk you through the options. Likewise if you would like to get your account emailed to you rather than posted we can set that up at the same time.

## WELCOME TO SUMMER!!

A couple of dry weeks have really started to change feed situations on farm. While there is plenty of feed out there, feed quality is certainly on the decline. Younger stock (ie lambs and calves) will struggle to find the type of feed in pasture swards to maintain good growth rates. Selling store lambs while the price remains relatively good may be an excellent option as weight gains in February and March are generally disappointing and the costs of drenching, dipping and dagging continue to mount.

High day time temperatures and pasture quality declines have also resulted in significant milk declines on dairy farms. Herd managers need to have grazing programmes in place that reduce the challenges posed by heat stress.

Dogs have been lost with heat stress in recent days so keep this in mind if you have to carry out stock work in the heat of the day.

Stay cool and in control!!!

## TIME CAPSULE USAGE

Just a reminder, if you are considering using time capsules for eczema prevention they need to be put in stock before spore counts reach dangerous levels.

Dairy farmers who use capsules in replacement stock need to start thinking about treatment dates. Call the clinic to discuss suitable programmes. This may involve taking spore counts from the paddocks your replacements are grazing .

## FACIAL ECZEMA

Last week we carried out our first spore counts of the season from some of our known 'hotspots'. All counts were zero or low.

We will continue to carry out 7-14 day counts from sites and results will be published on our Facebook page and website.

To date weather conditions have not really been conducive to spore development. What happens over February will have a significant impact on the type of eczema challenge we can expect.

PS. Dairy farmers who supplement with zinc should be initiating this programme if they have not already done so.



## RULES FOR USING TEASER RAMS IN EARLY LAMBING EWES

1. Teasers can be used at a rate of 1—300.



2. Teasers should be 'cut' for at least 4 weeks prior to use, ideally 6 weeks.
3. You get the best response to teasers if they are joined to ewes that **have not had exposure to rams** as it is the sudden presence of ram pheromones amongst the ewes that causes them to cycle.
4. Teasers should be put out with ewes 17—20 days before rams are introduced. They only have to be out a few days to have an effect.

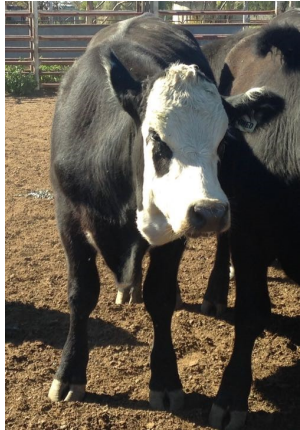


## WOODY TONGUE / ACTINOBACILLOSIS ...

... an old disease but several forms.

Woody tongue is caused by the bacteria known as *Actinobacillus lignieresii*. While most farmers know what woody tongue looks like, many are unaware that it can also infect other parts of the body. For example:

- infection in the skin can result in large masses that look like skin tumors, or in the case of the cheek skin, 'woody face'.
- Infection can also occur in the area of the rumen / terminal oesophagus causing chronic bloat.
- Infection of the nose or larynx results in cattle with very noisy breathing and possibly distorted faces.
- On occasions sheep or goats can also be affected.



**Woody Tongue**

While we can sometimes treat lesions with a single dose of antibiotics, for severe cases a course of antibiotics given over 3-5 days tends to give the best cure.



**Skin Infection**



**Nose Infection**

## MORE ON GRASS SEEDS IN DOGS!

To further the article on grass seeds last month (because this year we have seen so many!), we thought we'd update you on all the different signs you might notice if your dog has a grass seed.

1. A swelling with a small area of discharge (especially between toes and somewhere on the skin).
2. Sore or weepy eyes - we have removed many grass seeds from dogs eyes in the past 3 weeks. Please don't think it is the usual grass allergy common at this time of year, especially if you notice any changes like blueing of the cornea (eyes go bad quickly and we like to save your dogs' vision).
3. A sore mouth or a swelling of the lips - we have removed grass seeds that have been burying themselves in the gums of dogs.
4. Scooting - yes we have even squeezed grass seeds from dogs anal glands!
5. Sudden onset of coughing - dogs can breathe in grass seeds running through paddocks. These usually require referral as we don't have a camera that will look into your dogs small airways.



The sooner we see these dogs, the easier it is to remove grass seeds as they may not have travelled far. Grass seeds have tiny little burrs on the outside of them which grab and drag them forwards, preventing the body from expelling them and making them masters of moving deeper into tissues. The deeper they get, the bigger hole we have to make to remove them, increasing cost and time off work.

## BARBERS POLE PROTECTION

Just a reminder that February is the start of the time period over which you should be considering how to control barbers pole.

Unless you have a resistance issue all drenches will kill barbers pole on the day of drenching however drenches that contain moxydectin (Trimox, Exodus, Cydectin) or Closantel (Q Drench) will give a prolonged kill period of up to 30 days.

Using these products will prevent the early build up of barbers pole populations which reduces the chances of very high barbers pole challenge later in the summer and autumn period.

### Perks of reaching 60 or being over 70 and heading towards 80!

1. Kidnappers are not very interested in you.
2. In a hostage situation you are likely to be released first.
3. No one expects you to run-anywhere.
4. People call at 8 PM and ask: "Did I wake you?"
5. People no longer view you as a hypochondriac.
6. There is nothing left to learn the hard way.
7. Things you buy now won't wear out.
8. You can eat supper at 5 PM.
9. You can live without sex but not your glasses.
10. Your supply of brain cells is finally down to manageable size.
11. You can't remember who sent you this list.
12. And you notice these are all in Big Print for your convenience.

**Forward this to everyone you can remember right now! And remember, Never, under any circumstances, take a sleeping pill and a laxative on the same night!**

Congratulations to the following people whose names were drawn after returned their Vaccination forms.

- Jack Simpson
- Scott and Claire Clare
- Edmond Cousins
- Kaye Gallen / Richard Adkins

## AFTER HOURS VET

**Emergencies - 06 322 8058**

**Shop Hours - 8am to 5pm**

Monday to Friday

**Email - [huntervillevetclub@xtra.co.nz](mailto:huntervillevetclub@xtra.co.nz)**