

HUNTERVILLE VETERINARY CLUB

NEWSLETTER—JANUARY 2015



Work and Safety Changes



Many of you are probably aware that changes are planned in the area of health and safety in the work environment. Work Safe NZ has been formed to replace OSH and they appear to have a much more aggressive and focused attitude in terms of enforcing regulations (especially pertaining to farming) if a recent meeting I attended is anything to go by.

While owners and managers will need to focus on ensuring they have safe working environments for employees now, they are also responsible for ensuring the safety of outside contractors etc are also covered off. As veterinarians going on farm we will fall into this category. Our veterinarians and staff have been instructed that if they feel their safety is compromised on farm or they experience an accident or near miss they must inform the client and practice management immediately. To protect our employees and ensure the client and vet club do not face a future situation leading to possible prosecution, the identified threat to safety must be removed or minimised before further veterinary work can be carried out.

It would pay all our farming clients to ensure they understand where work and safety is heading, their obligations and how they can best manage this area. (It is more than just helmets on quad bikes.)

Scabby Mouth Vaccine Problems

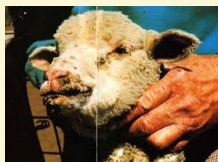
In early December some of our clients contacted us over concerns they had with scabby mouth in lambs where lambs had been vaccinated with Scabine at docking. It would appear following investigation on these properties, that there has been a vaccine failure.

Scabby mouth vaccine contains a live virus and if the virus dies for any reason the vaccine will not work. (Hence the strict protocol around storing and using scabby mouth vaccine.) We are not the only practice where this problem has been identified and the manufacturer's of the vaccine have traced the problem back to a small number of vaccine batches.

If you have noted a problem with high rates of scabby in your lambs following vaccination with SCABINE (there is no problem with other brands of vaccine) please contact the Clinic if we have not already made contact with you.

PS. This problem does highlight a number of points:

- *If you stop scratching then you can expect to see significant problems with scabby mouth especially if you have bad thistles.*
- *We have recommended that you check for vaccine takes 10-14 days after vaccination. This problem reinforces this advice.*
- *Ensure you handle this form of vaccine correctly. Keep it refrigerated and out of sunlight, etc.*



Managing Lighter Ewes / Hoggets From Weaning

The next 4-5 weeks offers the best opportunity to put weight back on ewes before tupping. Over January and early February the energy levels in well managed pastures tend to be greater than later on and stock will gain weight more easily.

It is now well understood that selectively feeding the bottom end of the average ewe flock gives a much greater pay back than putting that feed into the top end of the flock.

Ensuring that light ewes are drafted off, possibly drenched and have access to plenty of the best quality feed available is a good management practice. Don't leave it until February or later to do this. Such feed should be available on most farms this January.

Where paddocks are limited, even consider running light ewes back with lambs to ensure they have access to good quality feed.

THOUGHT OF THE WEEK:

It was entertainment night at the Senior Citizens' Centre. After the community sing-along led by Alice at the piano, it was time for the star of the show - Claude the Hypnotist! Claude explained that he was going to put the whole audience into a trance.

"Yes, each and every one of you and all at the same time," said Claude.

The excited chatter dropped to silence as Claude carefully withdrew, from his waistcoat pocket, a beautiful antique gold pocket watch and chain.

"I want you to keep your eyes on this watch" he said, holding the watch high for all to see. "It's a very special and valuable watch that has been in my family for six generations," said Claude.

He began to swing the watch gently back and forth while quietly chanting, "Watch the watch --- watch the watch ---- watch the watch" The audience became mesmerized as the watch swayed back and forth. The lights were twinkling as they were reflected from its gleaming surfaces. A hundred and fifty pairs of eyes followed the movements of the gently swaying watch. They were all hypnotized. And then, suddenly, the chain broke!!! The beautiful watch fell to the stage and burst apart on impact.

"SHIT," shouted Claude.

It took them three days to completely clean up the Senior Citizens' Centre and Claude was never invited back again.

Pregnancy Testing and Foetal Aging

For most dairy farmers, January is the most appropriate month for pregnancy testing herds if information is required around calving dates. We expect that given the payment, some clients may want to identify empty, low producing cows early for culling. If you have not pregnancy tested in the past, please contact the Clinic to discuss your testing requirements. With work loads in January we may not always be able to pregnancy test new herds at very short notice.



Checking Drench Guns

Another reminder to check that your drench guns are working well and delivering accurate doses before drenching. Every summer we investigate worm problems that are traced back to faulty drench guns or drenching techniques.

With some drenches, free drench gun deals are available. These drench guns, although they are plastic, perform well and last well if cleaned out after use and can be replaced when required. While expensive metal guns last for longer, the valves and springs in them have the same issues as plastic guns and must be regularly serviced to ensure they work correctly. If you employ staff, this must be someone's responsibility. (A large portion of the problems we see are on bigger properties with multiple staff.)

THE BEST DRUNK STORY OF THE MONTH ?

A drunken man walks into a biker bar, sits down at the bar and orders a drink. Looking around, he sees three men sitting at a corner table. He gets up, staggers to the table, leans over, looks the biggest, meanest, biker in the face and says:

'I went by your grandma's house today and I saw her in the hallway buck-naked. Man, she is one fine looking woman!'

The biker looks at him and doesn't say a word. His buddies are confused, because he is one bad biker and would fight at the drop of a hat.

The drunk leans on the table again and says: 'I got it on with your grandma and she is good, the best I ever had!' The biker's buddies are starting to get really mad but the biker still says nothing.

The drunk leans on the table one more time and says, 'I'll tell you something else, boy, your grandma liked it!'

At this point the biker stands up, takes the drunk by the shoulders looks him square in the eyes and says.....

'Grandpa,..... go home!'

Thiamine Deficiency In Ruminants

Thiamine / Vit B1 is made by the rumen microbes and a deficiency of Vit B1 results in the death of brain cells causing depression and blindness that is followed by death unless treated.

Anything that upsets the rumen microbes can cause Thiamine production to falter causing disease. We often see this in weaner calves (especially bucket reared calves) after weaning when they are being fed on high quality grasses. This season we have also seen problems in lambs moved onto plantain / clover pastures.

If you come across depressed / blind animals that are slow to move and appear to have a 'bad headache' think thiamine deficiency. While it may be too late to save badly affected animals, treatment of animals in the early stages of the problem with Vit B1 injections can be very effective.

To prevent the problem try to minimise the occurrence of sudden feed changes for stock especially where high quality forages are involved.

TEASER RAMS

IF YOU REQUIRE TEASER RAMS FOR ENSURING EWES CYCLE EARLY OR FOR HOGGET MATING, DON'T LEAVE IT TOO LATE TO GET THEM CUT. IDEALLY ENSURE YOU HAVE THEM CUT IN THE NEXT COUPLE OF WEEKS, YOU MAY NEED TO HAVE THEM OUT BY FEBRUARY!!!

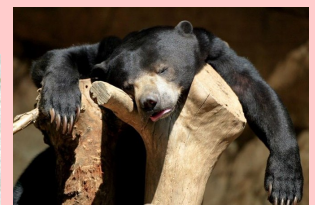
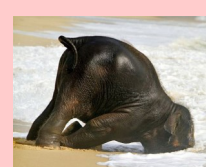
Anna's Corner

1. Please get your vaccine requirements to me as soon as possible, especially Toxovax, so we can ensure you get what you need.
2. The Rangitikei Hunt Club are hosting a HORSE TREK from Mokai to Ruahine Ranges on 28th Feb.
Enquiries: Mark Hobson
06 382 5825



Cheers, Anna 😊

Happy New Year to all our clients. We hope you have had a fabulous Christmas (and haven't over-indulged too much).



Thank you for your support over the last 12 months and we look forward to tending to all of your animal health requirements in 2015.

After Hours Vet



Emergencies: Phone 06 322 8058

Shop Hours: 8am to 5pm, Monday to Friday

Email: huntervillevetclub@xtra.co.nz

Website: www.huntervillevetclub.co.nz